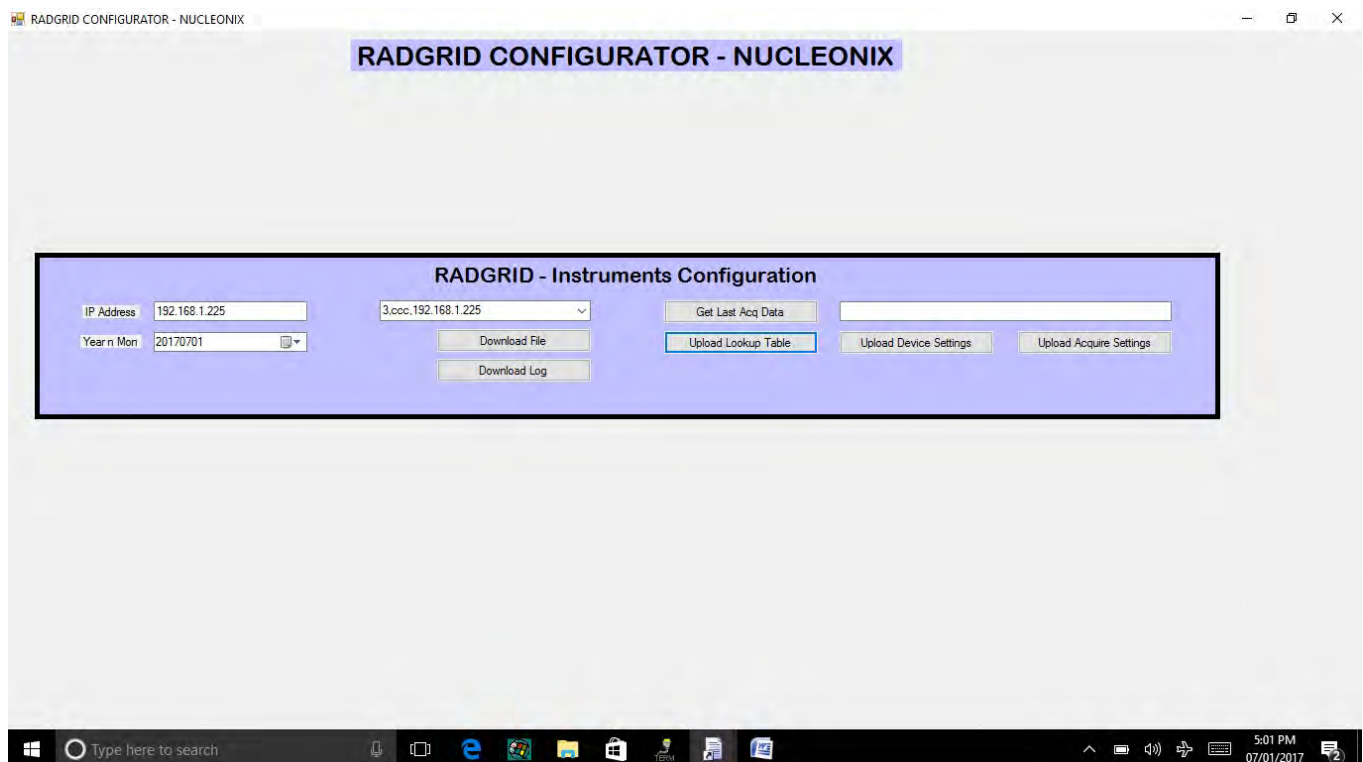


## Technical Data

'Radgrid' is a data communication software, designed primarily to log the data from a host of Radiation Monitors in a network either RS485 / Ethernet. These devices could be Area Gamma Monitor, with built-in detectors or connected with smart probes, operating in different measuring units, stack activity monitors in a PET medical cyclotron facility or other Radiological facilities, including food / radiation plants etc., Environmental Radiation Monitors operating in outdoor conditions.

This Facilitates & reads, dose rate & fault diagnostics information, into a centralized computer station. This software facilitates User to set /change parameters through 'config' menu. Parameters like PRESET-ALARM, C.F factor etc can be changed by device settings & acquire settings.



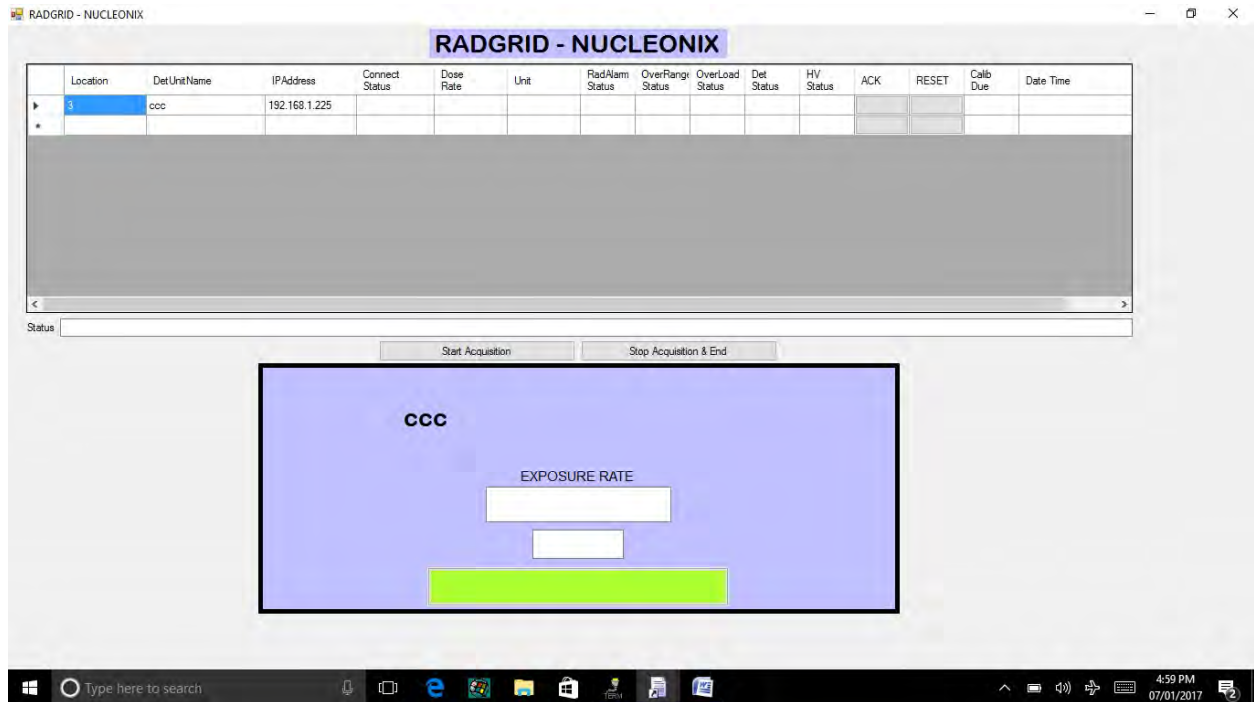
### Device Settings:

User can change measuring unit and Calibration factor .

### Acquire settings:

In this User can change Alarm level, by changing acquire settings :

- i. preset level -mR/h
- ii. preset level -Sv/h
- iii. preset level -CPS
- iv. preset level -Bq



### Start Acquisition :

Once "start acquisition " is selected, instruments get connected to Radgrid through Ethernet communication with respective I.P address .Instrument I.P addresses are saved in local disk D. User can change set location,device name,I.P addresses.

### The following details of instruments are displayed :

- column-1:location of instrument.
- column-2: Device name.
- column-3: I.P Address of device.
- column-4: Connection status.
- column-5: Dose rate level.
- column-6: Units of dose rate.
- column-7: Alarm status.
- column-8: OVR range status.
- column-9: OVR status.
- column-10: Detector Status.
- column-11: HV status.
- column-12: "ACK" button for muting the audio.
- column-13: "RESET" button for resetting the device.
- column-14 : Calibration due date .
- column-15: Date and Time.

To disconnect the Rad-Grid or for CONFIG on Clicking "STOP ACQUISITION"then continue.